

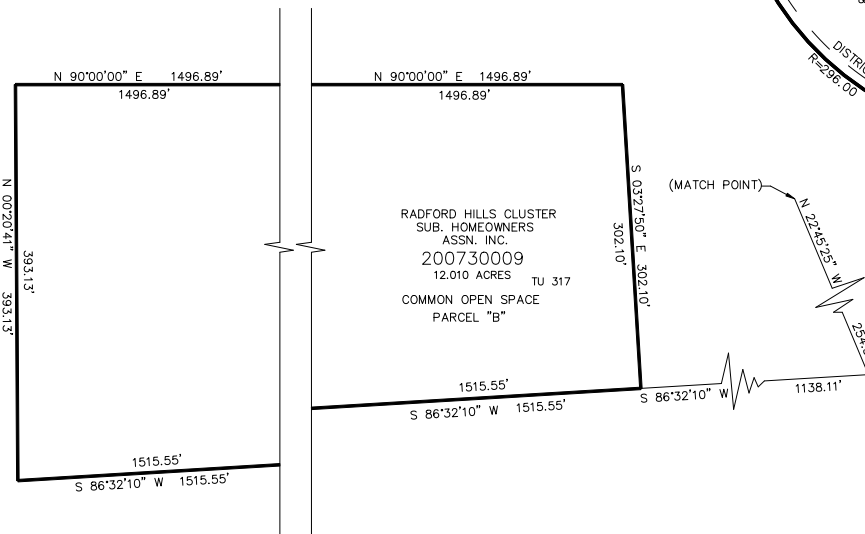
RADFORD HILLS NO. 5A

WEBER COUNTY  
SCALE 1" = 100'

TAXING UNIT: 317,401

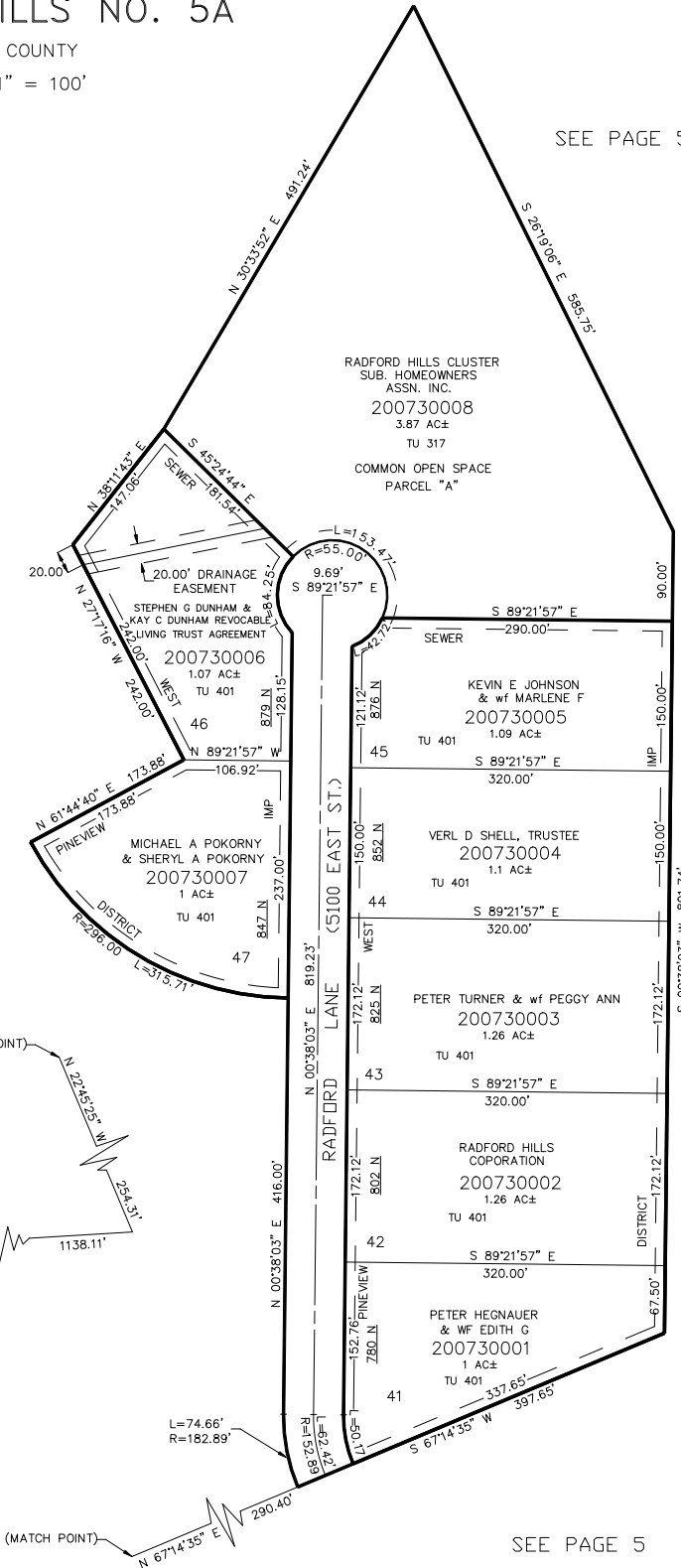
SEE PAGE 5

SEE PAGE 5



FOR COMPLETE ENG DATA SEE ORIGINAL DEDICATION PLAT IN BOOK 52, PAGE 92 OF RECORDS.

10' UTILITY & DRAINAGE EASEMENTS EACH SIDE OF PROPERTY LINES AS INDICATED BY DASHED LINES EXCEPT AS OTHERWISE SHOWN.



SEE PAGE 5